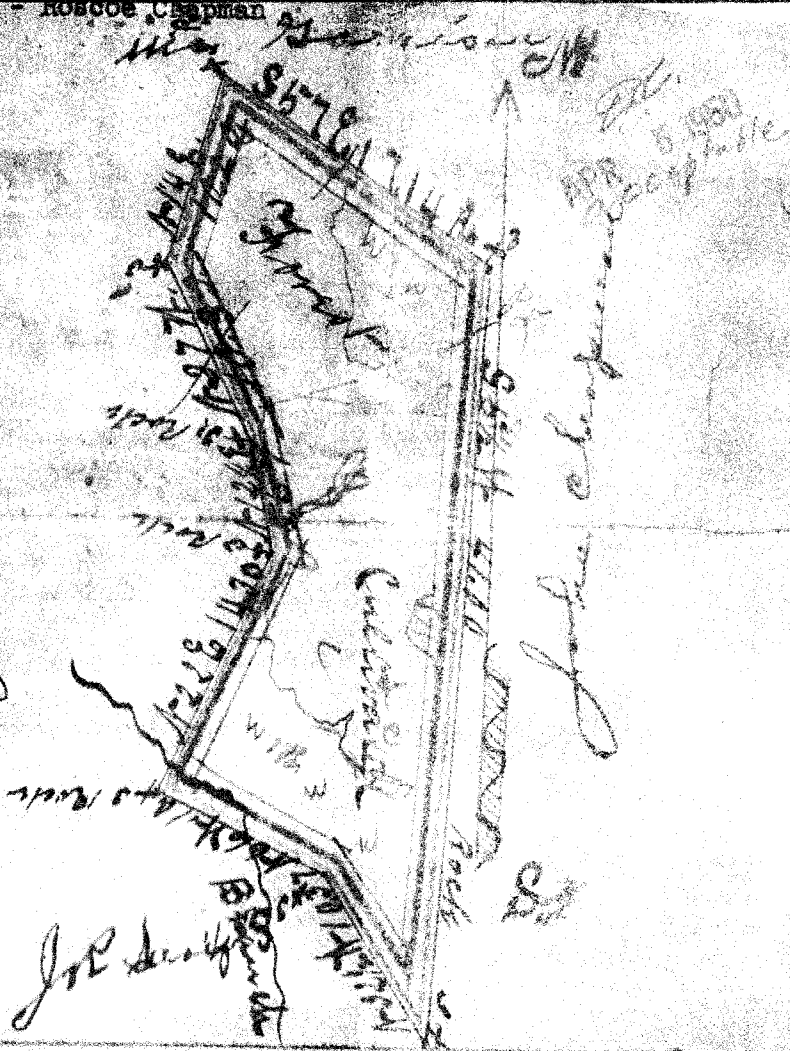


Joe N. Black



Joe N. Black

This plat represents the middle section of W. M. Bingham's home place and has such marks & boundaries as are given above.

Resurveyed Sept-1<sup>st</sup> 1857.  
 5/8<sup>th</sup> more or less of J. L. Pearson

#9708 Filed This 30 day of Sept 19 50  
 and Recorded in Book 7 Page 139 of 1849 M.  
 Cecil Lawrence  
 Register Clerk, Florence Greenville County, S. C.